

---

## Factory Cheap Self Adhesive Inkjet Clear Film - Roof Manual Film Reeler Hand Crank Winch Roll Up Unit for Poly Film Greenhouse Ventilation NA105 - Fenglong Greenhouse

What is Manual Film Reeler?

Manual Film Reeler, also known as Manual Roll Up Unit, is widely used in poly greenhouse or livestock. Through opening or closing the greenhouse film by manual film reeler, it allows you to properly control your greenhouse easier, like the ventilation, shading, humidity, air exchange and temperature.

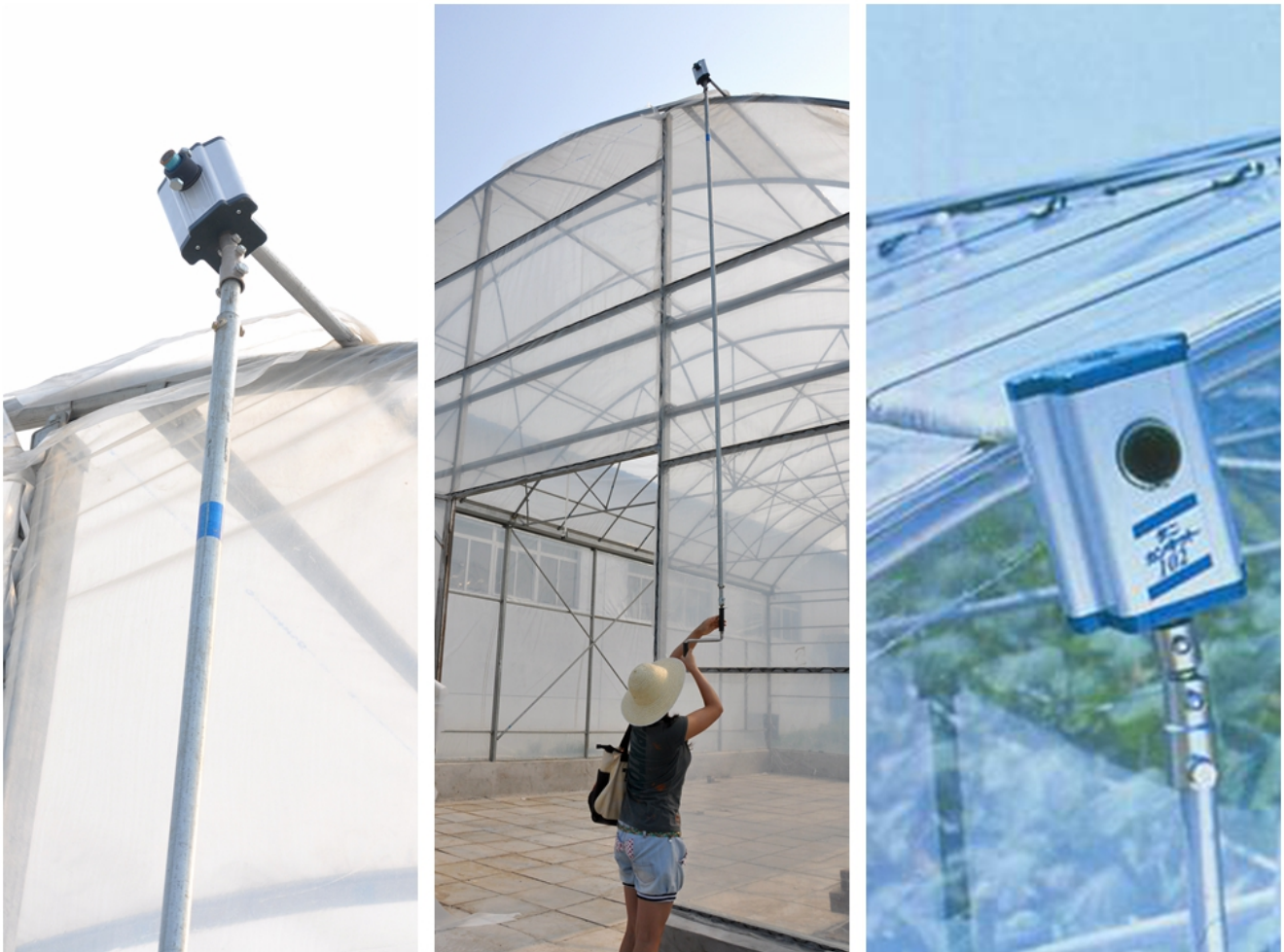
---

Exported To 40 Countries:

Fenglong FLC® Manual Film Reeler has been serving customers in 40 countries since 2003.

---

Roof Sidewall ventilation of greenhouse, Easy to Install and Operate



---

Big Output Torque



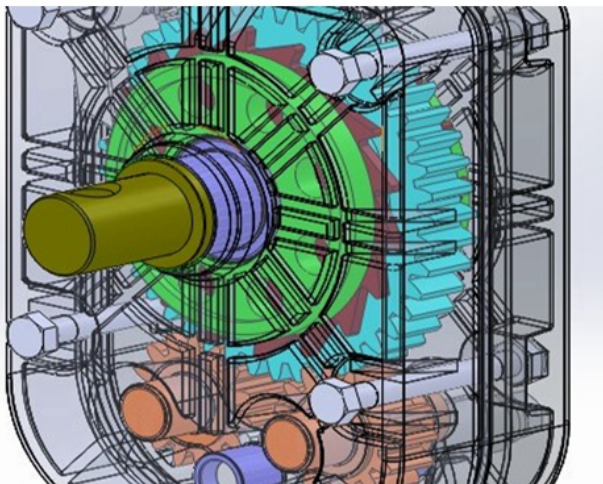
---

Broadly Application



---

Add the Transition Gear in the transmission system, Reliable performance of self-locking



---

Reliable performance of self-locking, accurate limit range, automatic brake holds sidewall in place

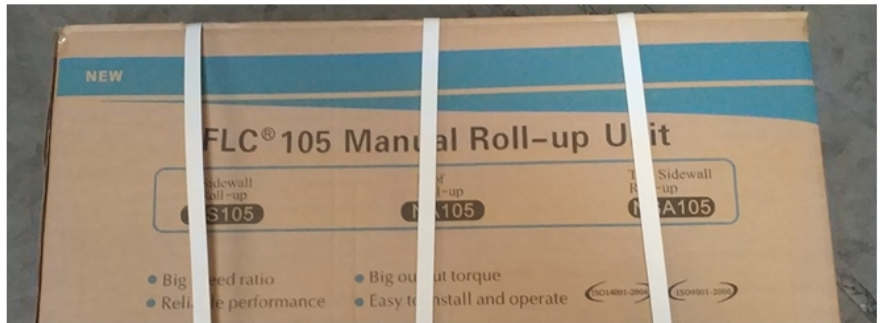
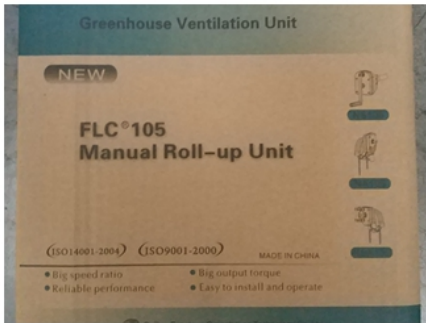




Various gear ratio for choosing

Product Code	Model No.	Torque	Speed Ratio	Rolling Length	Application	Size of Rolling Tube	Size of Guiding Tube	Guarantee
110101100010	NA104	30N·m	4:1	≤100m	Sidewall and Roof	Φ19orΦ22orΦ27.5	Crank rodΦ22 or Φ27.5	3 years
110200200010	NA105	50N·m	5:1	≤100m	Roof	Φ22orΦ27.5	upper pipe for slip pipeΦ22orΦ27.5	3 years
110205300010	BA107	60N·m	7:1	≤130m	Roof	Φ22orΦ27.5	lower pipe for slip pipeΦ27.5orΦ33.5	3 years

Internal and External Package



### 3 Years Guarantee

Quality-assured, from purchasing date, within the warranty period, FLC would do full compensate or replace them all for problematic products.

### Packing and Delivery



---

## Product Presentation

---

Product link : <https://www.wigglewires.com/?p=191304>