
Factory selling Clear Plastic Panels Greenhouse - Sidewall Manual Film Reeler Hand Crank Winch Roll Up Unit for Poly Film Greenhouse Ventilation BS107 - Fenglong Greenhouse

What is Manual Film Reeler?

Manual Film Reeler, also known as Manual Roll Up Unit, is widely used in poly greenhouse or livestock. Through opening or closing the greenhouse film by manual film reeler, it allows you to properly control your greenhouse easier, like the ventilation, shading, humidity, air exchange and temperature.

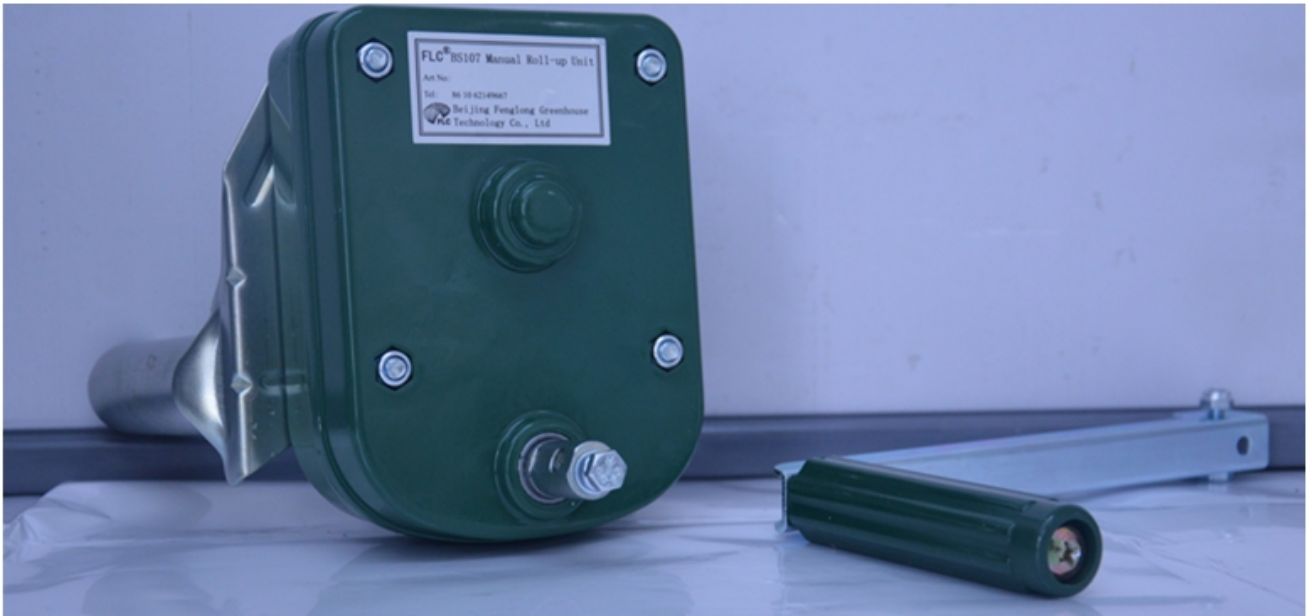
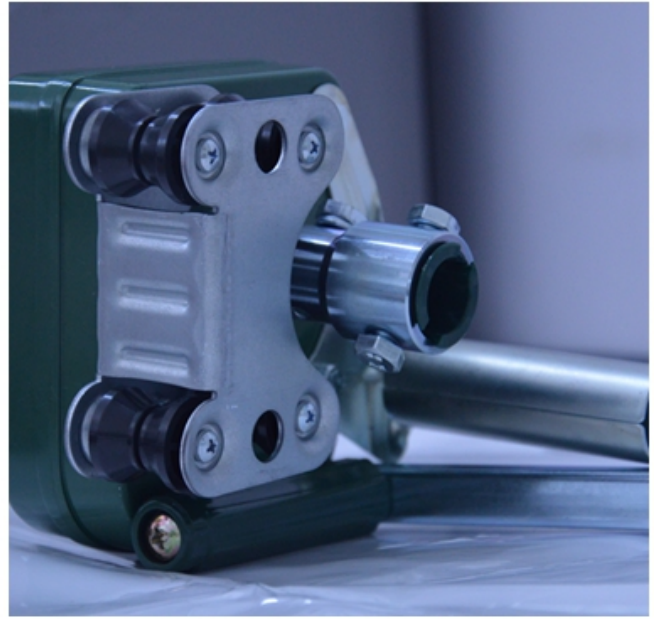
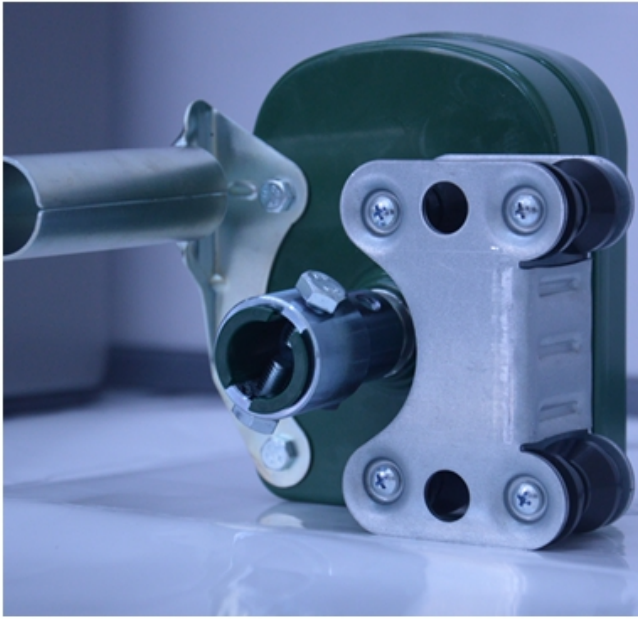
Exported To 40 Countries:

Fenglong FLC® Manual Film Reeler has been serving customers in 40 countries since 2003.

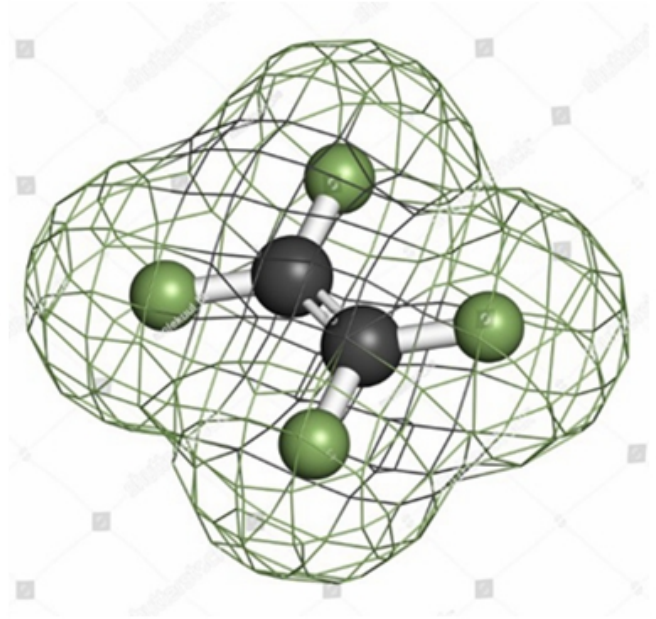
Bigger Speed Ratio 7:1, Manpower Saving



Full plastic resin casing for long anti-corrosion time



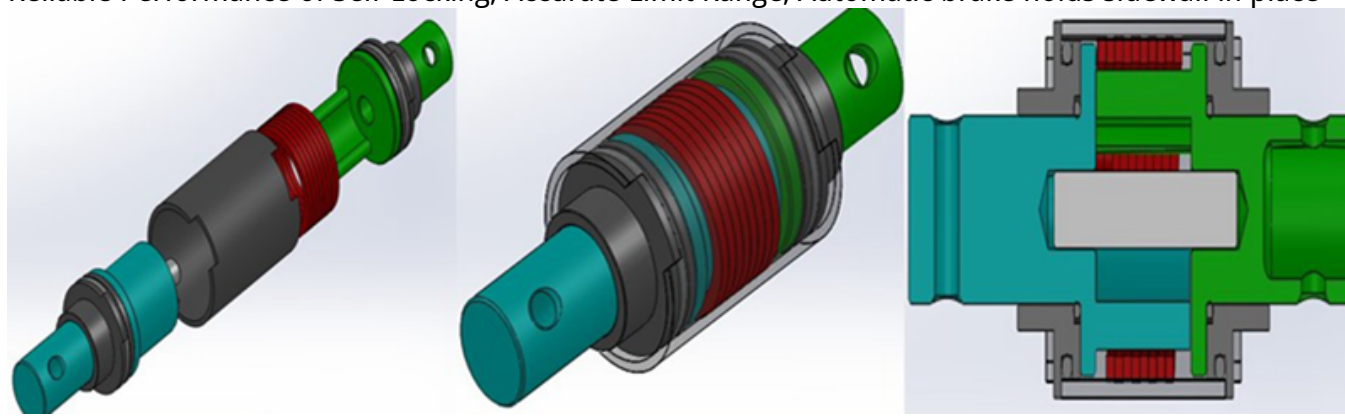
Electrophoretic and fluorocarbon Painting, Hot Galvanized Coating



Rustless Stainless Steel Handles



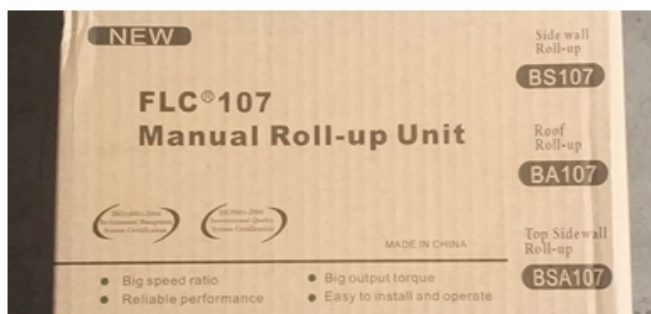
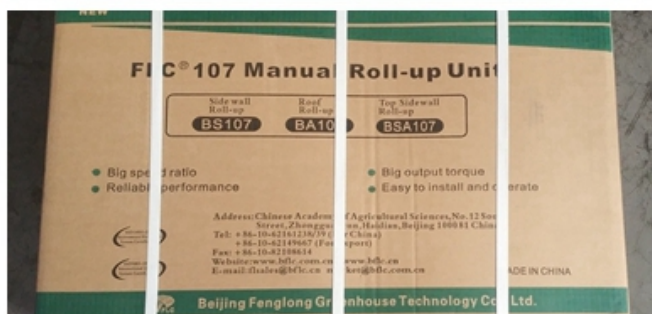
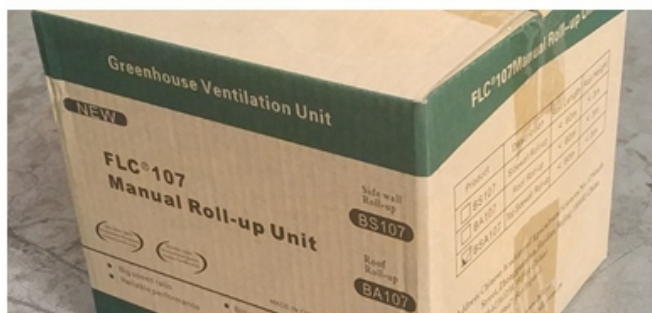
Reliable Performance of Self-Locking, Accurate Limit Range, Automatic brake holds sidewall in place



Various Gear Ratio For Choosing

| Product Code | Model No. | Torque | Speed Ratio | Rolling Length | Application | Size of Rolling Tube | Size of Guiding Tube | Guarantee |
|--------------|-----------|--------|-------------|----------------|-------------|----------------------|----------------------|-----------|
| 110202100010 | BS104 | 30N·m | 4:1 | ≤90m | Sidewall | Φ25x2orΦ27.5 | Φ27.5 | 3 years |
| 110200400010 | NS105 | 50N·m | 5:1 | ≤100m | Sidewall | Φ22orΦ27.5 | Φ27.5 | 3 years |
| 110205200010 | BS107 | 60N·m | 7:1 | ≤130m | Sidewall | Φ22orΦ27.5 | Φ27.5 | 3 years |

Internal and External Package



3 Years Guarantee

Quality-assured, from purchasing date, within the warranty period, FLC would do full compensate or replace them all for problematic products.

Product Presentation

Product link : <https://www.wigglewires.com/?p=221556>