
Manufacturer for Greenhouse Heating System - Sidewall Manual Film Reeler Hand Crank Winch Roll Up Unit for Poly Film Greenhouse Ventilation BS107 - Fenglong Greenhouse

What is Manual Film Reeler?

Manual Film Reeler, also known as Manual Roll Up Unit, is widely used in poly greenhouse or livestock. Through opening or closing the greenhouse film by manual film reeler, it allows you to properly control your greenhouse easier, like the ventilation, shading, humidity, air exchange and temperature.

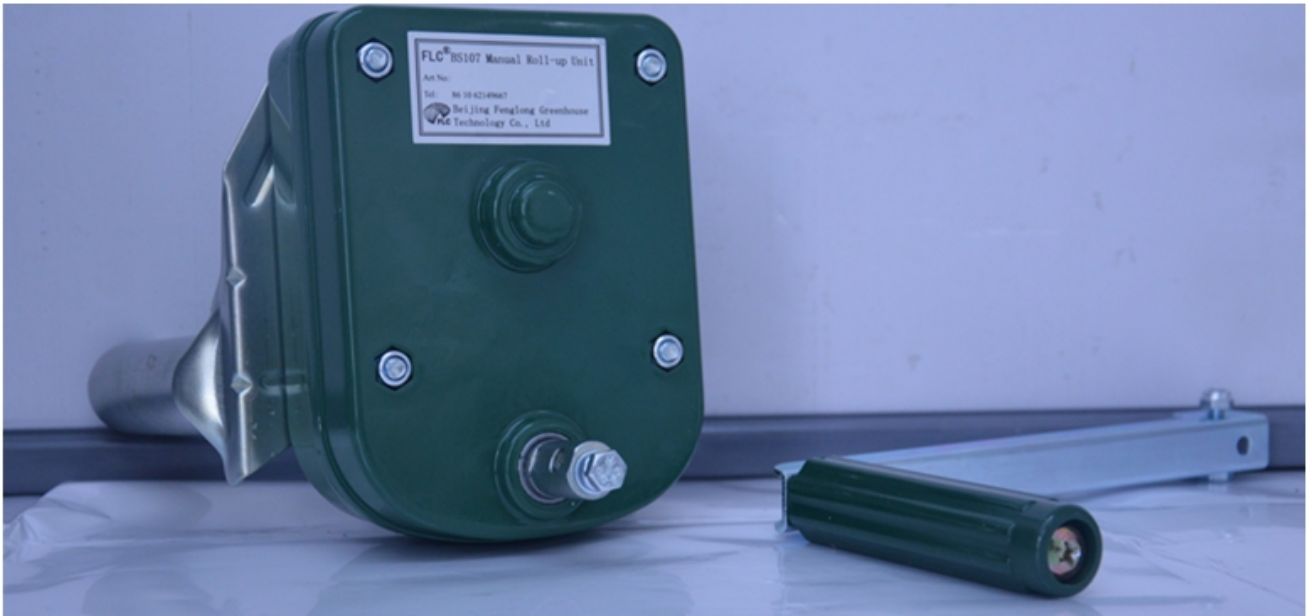
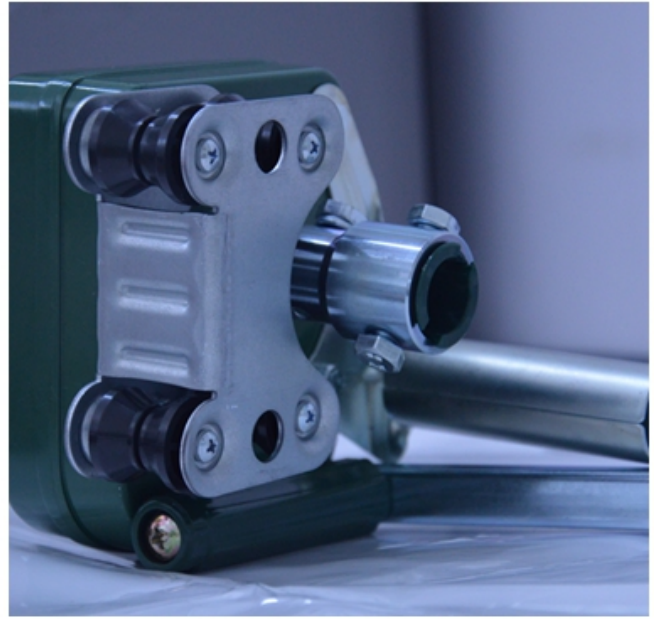
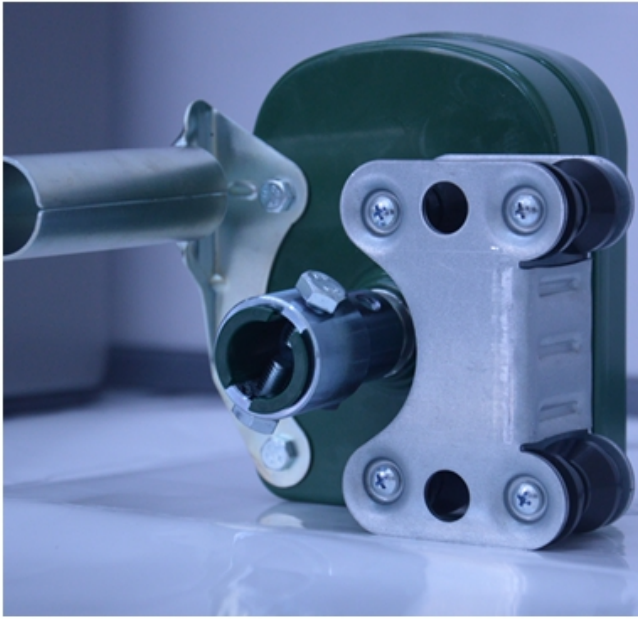
Exported To 40 Countries:

Fenglong FLC® Manual Film Reeler has been serving customers in 40 countries since 2003.

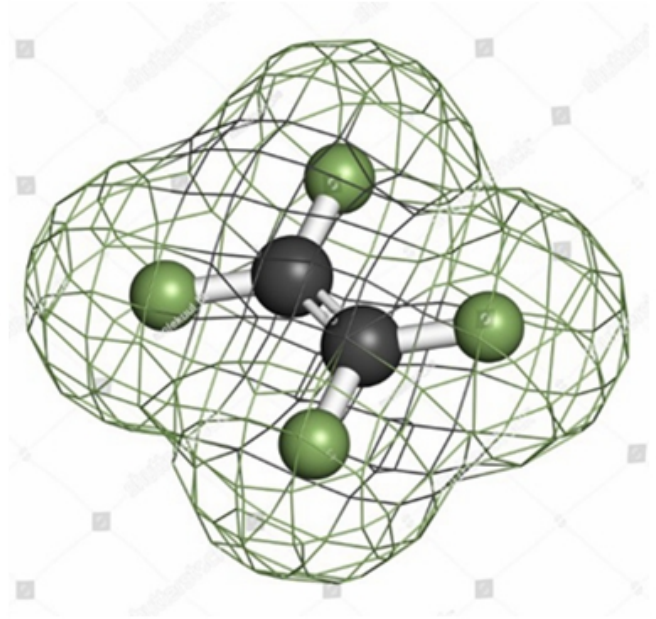
Bigger Speed Ratio 7:1, Manpower Saving



Full plastic resin casing for long anti-corrosion time



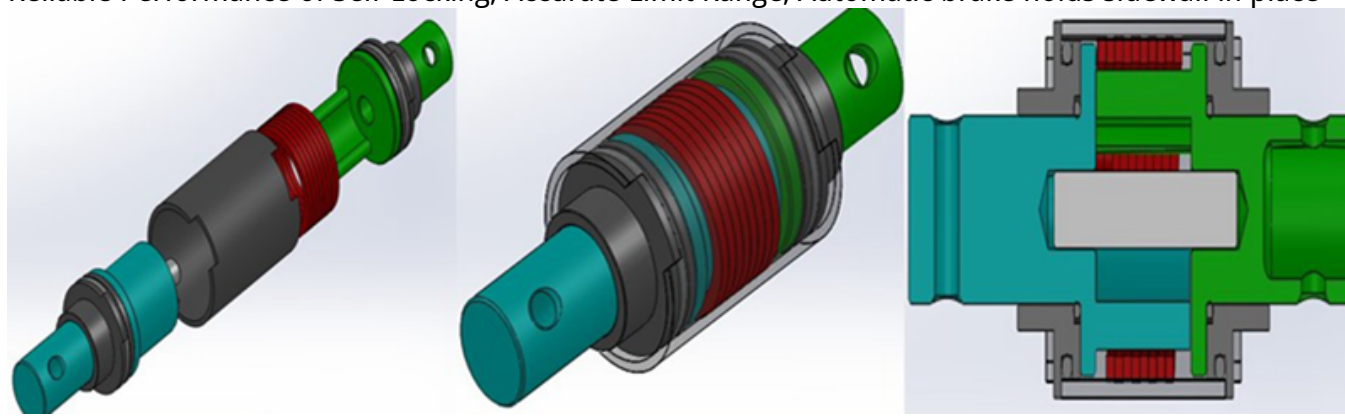
Electrophoretic and fluorocarbon Painting, Hot Galvanized Coating



Rustless Stainless Steel Handles



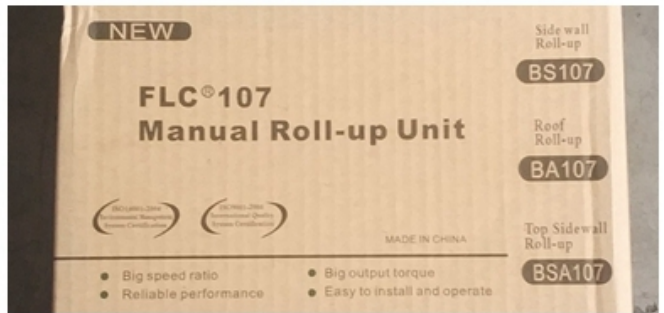
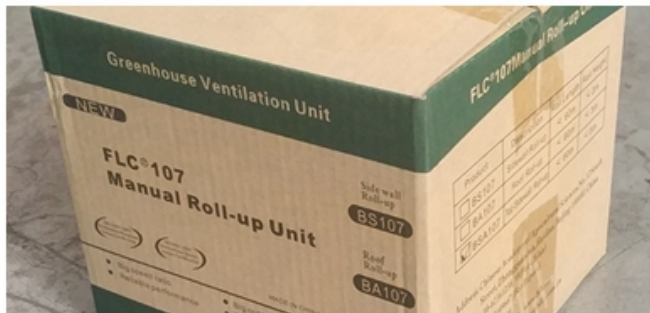
Reliable Performance of Self-Locking, Accurate Limit Range, Automatic brake holds sidewall in place



Various Gear Ratio For Choosing

Product Code	Model No.	Torque	Speed Ratio	Rolling Length	Application	Size of Rolling Tube	Size of Guiding Tube	Guarantee
110202100010	BS104	30N·m	4:1	≤90m	Sidewall	Φ25x2orΦ27.5	Φ27.5	3 years
110200400010	NS105	50N·m	5:1	≤100m	Sidewall	Φ22orΦ27.5	Φ27.5	3 years
110205200010	BS107	60N·m	7:1	≤130m	Sidewall	Φ22orΦ27.5	Φ27.5	3 years

Internal and External Package



3 Years Guarantee

Quality-assured, from purchasing date, within the warranty period, FLC would do full compensate or replace them all for problematic products.

Product Presentation

Product link : <https://www.wigglewires.com/?p=269251>