

---

# China wholesale Hydroponics Greenhouse - High Sidewall Manual Film Reeler Hand Crank Winch Roll Up Unit for Poly Film Greenhouse Ventilation NSA105 - Fenglong Greenhouse

What is Manual Film Reeler?

Manual Film Reeler, also known as Manual Roll Up Unit, is widely used in poly greenhouse or livestock. Through opening or closing the greenhouse film by manual film reeler, it allows you to properly control your greenhouse easier, like the ventilation, shading, humidity, air exchange and temperature.

---

Exported To 40 Countries:

Fenglong FLC® Manual Film Reeler has been serving customers in 40 countries since 2003.

---

HIGH SIDEWALL ventilation of Poly Greenhouse



---

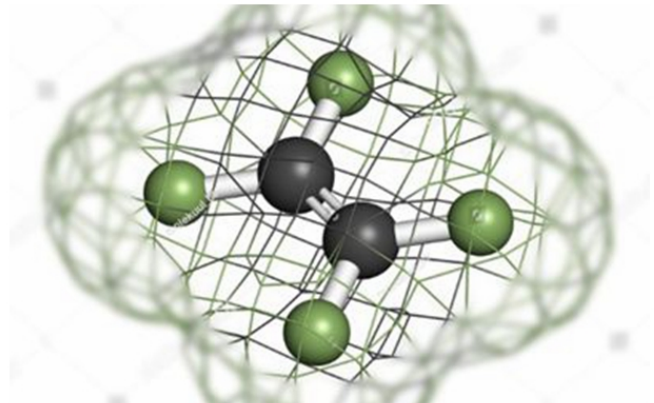
6 or 8 meters CHAIN for high position of sidewall



---

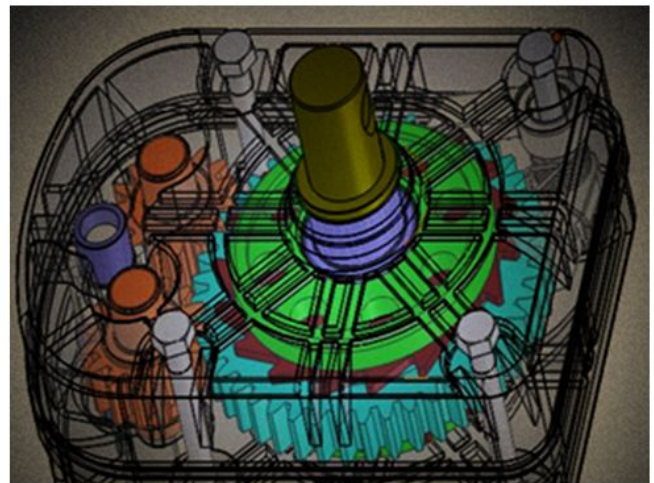
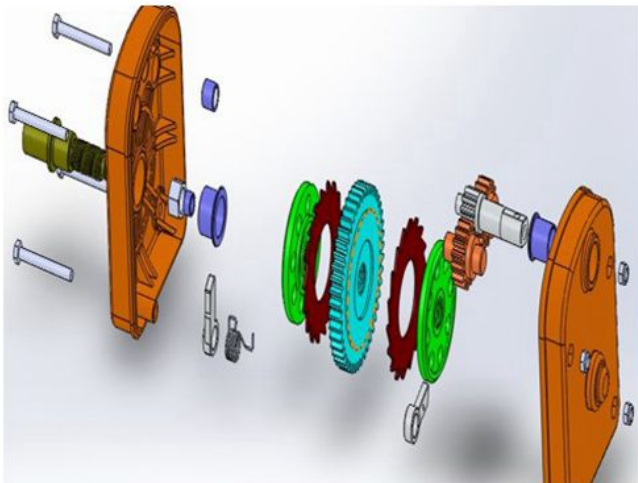
Electrophoretic and fluorocarbon Painting, Hot Galvanized Coating





---

Add the Transition Gear in the transmission system with more steady performance



---

Reliable performance of self-locking, accurate limit range, automatic brake holds sidewall in place

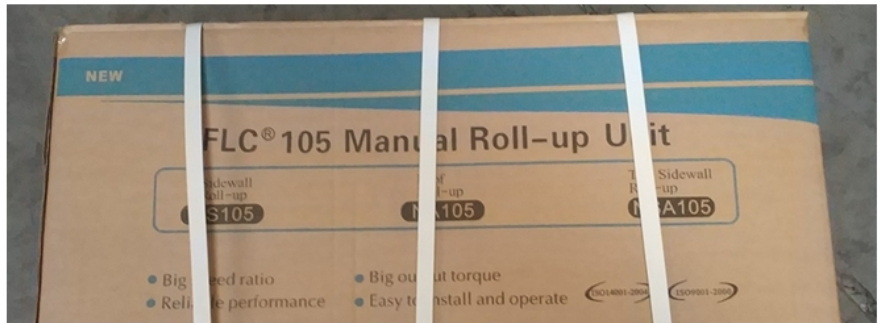
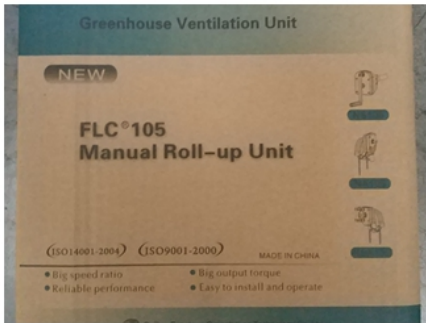


Various gear ratio for choosing

Product Code	Model No.	Torque	Speed Ratio	Rolling Length	Application	Size of Rolling Tube	Size of Guiding Tube	Guarantee
110200600010	NSA105	40N·m	5:1	≤90m	High Sidewall	Φ22orΦ27.5	Φ27.5	3 years
110205100010	BSA107	50N·m	7:1	≤90m	High Sidewall	Φ22orΦ27.5	Φ27.5	3 years

Internal and External Package





### 3 Years Guarantee

Quality-assured, from purchasing date, within the warranty period, FLC would do full compensate or replace them all for problematic products.

### Packing and Delivery



---

## Product Presentation

---

Product link : <https://www.wigglewires.com/?p=275209>