
Rapid Delivery for Factory Used Stretch Film - Roof Manual Film Reeler Hand Crank Winch Roll Up Unit for Poly Film Greenhouse Ventilation NA105 - Fenglong Greenhouse

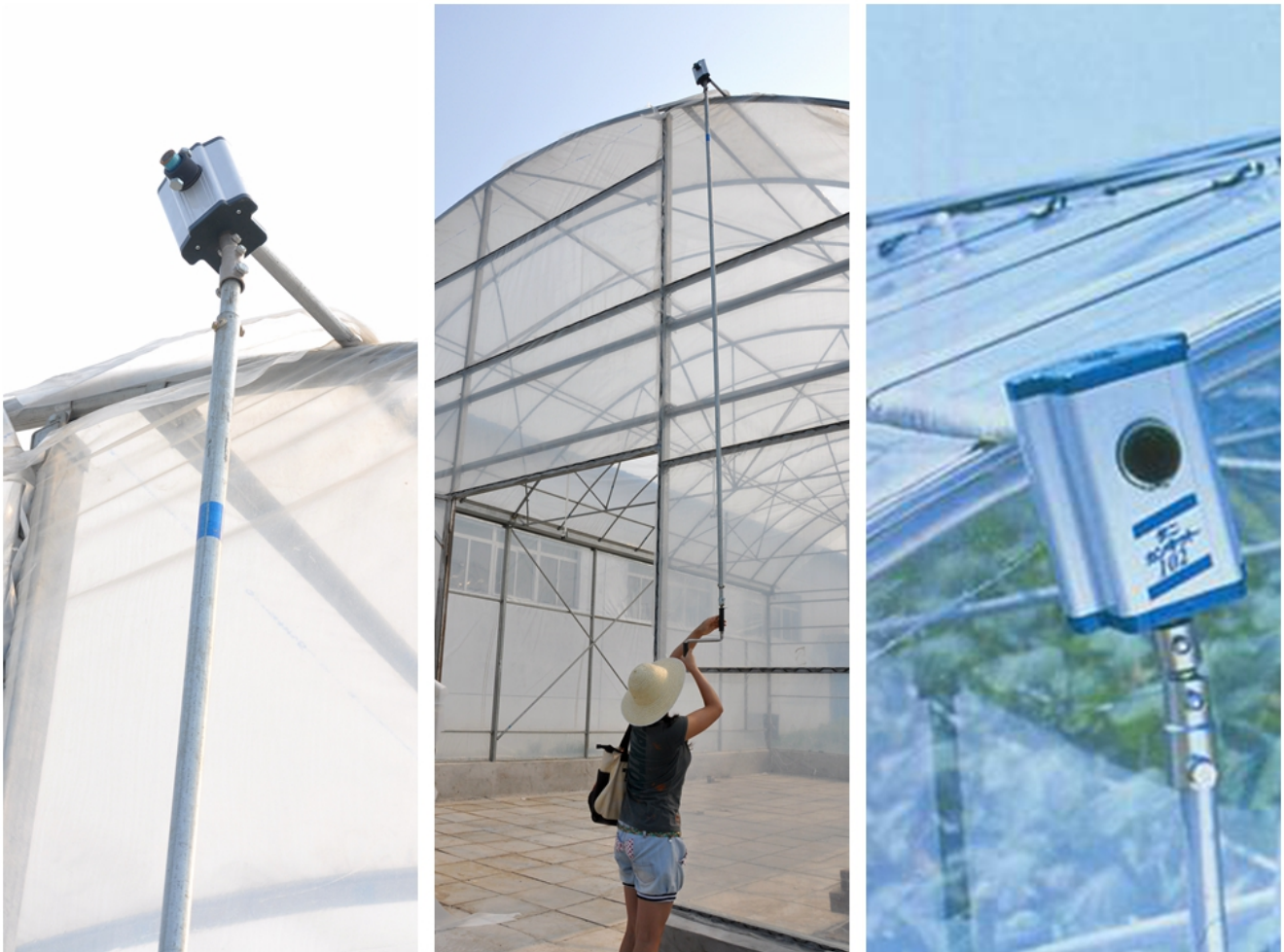
What is Manual Film Reeler?

Manual Film Reeler, also known as Manual Roll Up Unit, is widely used in poly greenhouse or livestock. Through opening or closing the greenhouse film by manual film reeler, it allows you to properly control your greenhouse easier, like the ventilation, shading, humidity, air exchange and temperature.

Exported To 40 Countries:

Fenglong FLC® Manual Film Reeler has been serving customers in 40 countries since 2003.

Roof Sidewall ventilation of greenhouse, Easy to Install and Operate



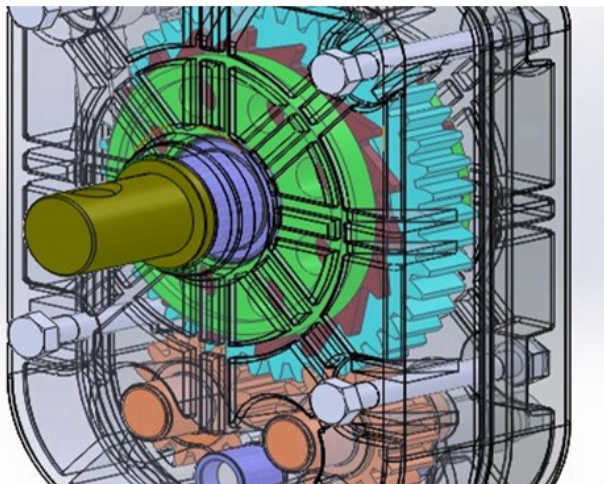
Big Output Torque



Broadly Application



Add the Transition Gear in the transmission system, Reliable performance of self-locking



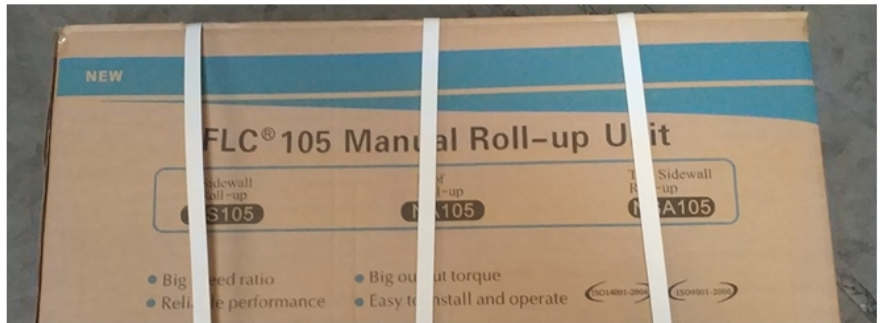
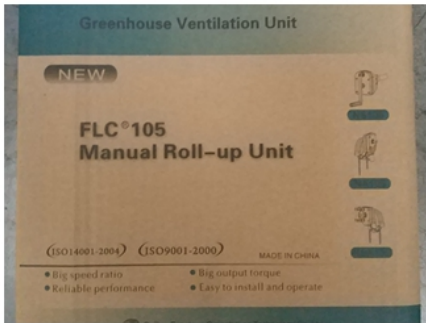
Reliable performance of self-locking, accurate limit range, automatic brake holds sidewall in place



Various gear ratio for choosing

| Product Code | Model No. | Torque | Speed Ratio | Rolling Length | Application | Size of Rolling Tube | Size of Guiding Tube | Guarantee |
|--------------|-----------|--------|-------------|----------------|-------------------|----------------------|--------------------------------------|-----------|
| 110101100010 | NA104 | 30N·m | 4:1 | ≤100m | Sidewall and Roof | Φ19orΦ22orΦ27.5 | Crank rodΦ22 or Φ27.5 | 3 years |
| 110200200010 | NA105 | 50N·m | 5:1 | ≤100m | Roof | Φ22orΦ27.5 | upper pipe for slip pipeΦ22orΦ27.5 | 3 years |
| 110205300010 | BA107 | 60N·m | 7:1 | ≤130m | Roof | Φ22orΦ27.5 | lower pipe for slip pipeΦ27.5orΦ33.5 | 3 years |

Internal and External Package



3 Years Guarantee

Quality-assured, from purchasing date, within the warranty period, FLC would do full compensate or replace them all for problematic products.

Packing and Delivery



Product Presentation

Product link : <https://www.wigglewires.com/?p=280441>